

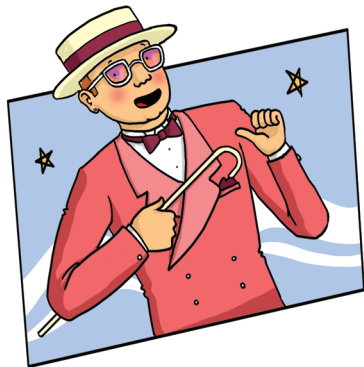
Reactive

Level 4

Element B

**Sing short phrases  
to me from  
familiar songs**

Card  
**34**



## Remember that the 'hook' of a song is the first thing I'm likely to get hold of:

- pick out the most characteristic phrase from a song, and sing it repeatedly – see if I start to anticipate what is coming next...
- 'I'm still standing' from the song of the same name by Elton John
- 'Every little thing gonna be alright' from *Three Little Birds* by Bob Marley
- 'I am the one' from *Billie Jean* by Michael Jackson
- 'Isn't she lovely' from the song of the same name by Stevie Wonder
- 'Just the way you are' from the song of the same name by Billy Joel